

**OLD GREENWICH YACHT CLUB**  
**SAILING INSTRUCTIONS**  
**Russel K.Payea Round-the-Islands Chase Race**  
**Saturday, June 15, 2019**

**MANAGEMENT:** The current Racing Rules of Sailing as adopted by the US Sailing Association will govern except as modified herein. All radio communications between the Race Committee and race participants will be on VHF Channel 65. Skippers shall monitor Channel 65 for announcements from the Race Committee and/or the Event Chairman between 1200 and ten minutes after crossing the finishing line.

**INSTRUCTIONS & START TIMES:** It is the skipper's responsibility to get their start time and any changes in the instructions from the Committee Boat, not later than 12:40 on the day of the race. Skippers must confirm yacht name and sail number to the Committee by sailing past the stern on starboard tack. Name and number will be acknowledged. Start time for each yacht will be the noted time elapsed from the start gun for each yacht's PHRF. A document listing individual start times will be available on [www.OGYC.org](http://www.OGYC.org) under Racing/Race Documents.

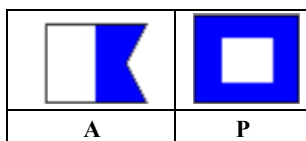
**TIME LIMIT:** The time limit for each yacht shall be 4 hours from its start time.

**RATINGS:** YRA of LIS PHRF ratings will be used. A rating will be assigned if a valid 2019 YRA of LIS PHRF certificate is not available. Yachts may race with or without spinnaker. Yacht racing with spinnaker shall have a flag #1 on their backstay and inform the race committee of their intent to race with spinnaker. Yachts with spinnaker will be scored with their spinnaker PHRF rating. Yachts racing without spinnaker will be scored with their PHRF non-spinnaker rating. Yachts competing in this race as non-spinnaker are prohibited from the use of any headsail whose mid-girth (mid-luff to mid-leech) is more than 50% of its foot measurement. This means: no flashers, jib only. Except when changing headsails, participating yachts may not fly more than one headsail at a time

**START AREA:** The start area will be approximately 1/4 mile SW of Newfoundland Reef Buoy.

**START SEQUENCE:**

	<b>SIGNAL</b>	<b>FLAG and SOUND</b>	<b>Minutes before Starting Signal</b>
12:55	Warning	A flag, 1 blast	5
12:56	Preparatory	P flag, 1 blast	4
12:59	One minute	P flag dropped 1 blast	1
13:00	Starting	A flag dropped- one long blast	0



**STARTING and FINISHING LINES:** The Starting Line and Finishing Line will be established between a Yellow flag on the Committee Boat and a pin with a yellow flag or an adjacent mark.

**SCORING METHOD:** All boats will be scored in order of finish.

**COURSE:** Round the Island Race course will be A, G, L - round all marks to starboard. The Hen & Chickens Can C-1A shall be passed on the North side. The channel between Cormorant Reef and Great Captain Island shall not be used. Red Rock buoy and Newfoundland Reef buoy shall be passed on the South side.

**POSTPONEMENT:** Any postponement of the start will be signaled by code flag "AP" and 2 sound signals. The warning signal will be made one minute after this signal is lowered with one sound signal.

**ABANDONMENT:** Code flag "N" and 3 sound signals. For all racers, whether started or not, the race shall be abandoned.

**INDIVIDUAL RECALL:** Code Flag "X" and one sound signal. The Race Committee will attempt to broadcast sail numbers of premature starters over VHF Ch 65. Failure of the Race Committee to notify any yacht of a premature start does not relieve that yacht of her obligation to start properly.

**WITHDRAWALS:** Any yacht withdrawing from the race for any reason shall notify the Race Committee by hailing or by VHF Ch 65.

**PROTESTS:** Protests shall be made in accordance with Rule 61.3

**YACHT SAFETY AND RESPONSIBILITY:** It is the sole responsibility of the master of each yacht to see that she is seaworthy in all respects and that she is manned by a competent crew. The master and all the members of the crew of each yacht, by participating in this race, agree to do so at their own risk, and waive any claim against and hold harmless Old Greenwich YC, its officers, directors, committees, members, employees and agents against any claims arising in any way out of the participation in this race of such yacht, her master and crew.

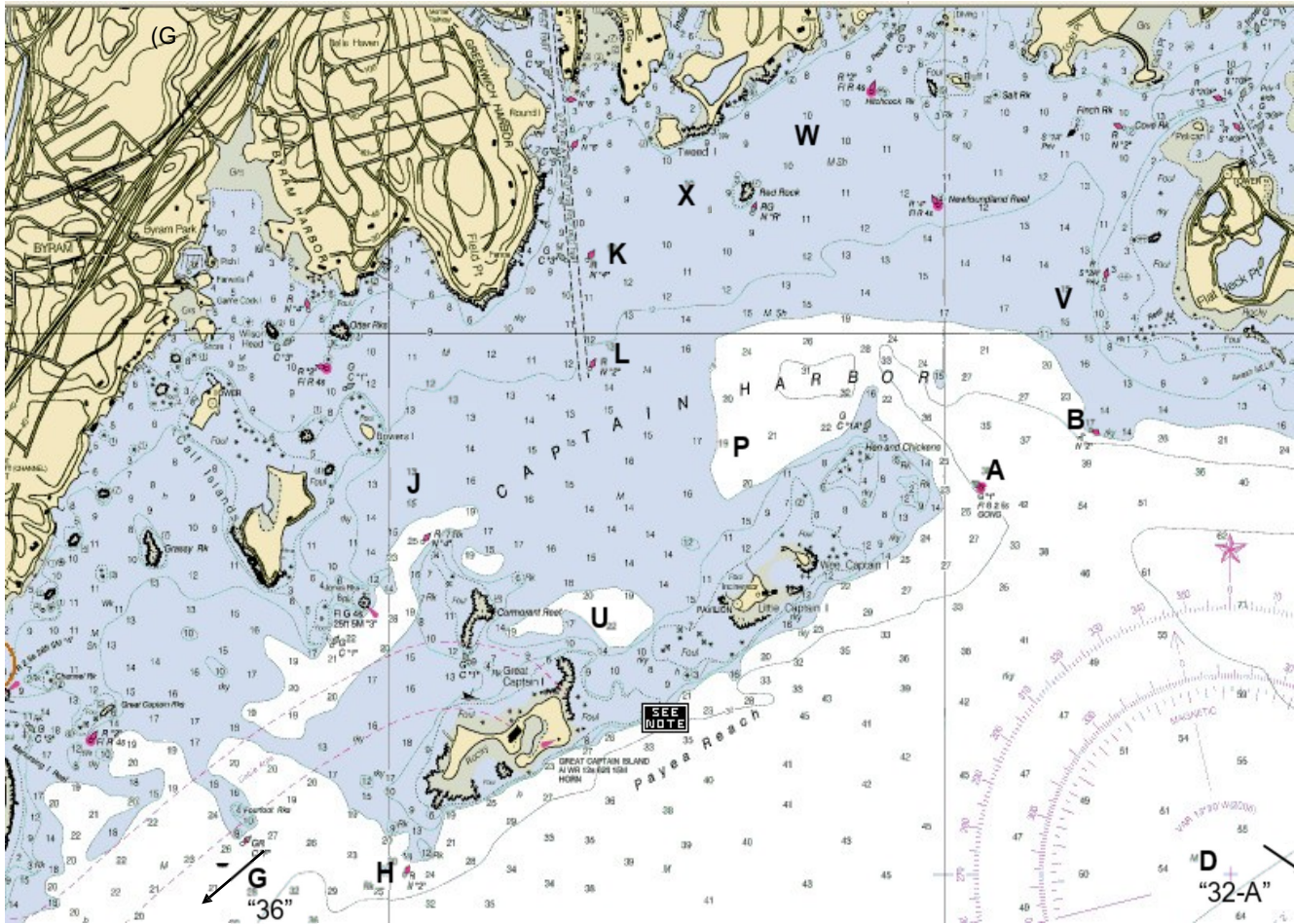
**PRIZES and TROPHIES:** 1<sup>st</sup>, 2<sup>nd</sup>, and 3<sup>rd</sup> places will be awarded prizes. The Payea Memorial Chase Race Trophy will be awarded to the overall winner at the Old Greenwich YC Awards ceremony.

#### **FURTHER INFORMATION**

Old Greenwich Yacht Club  
Tod's Driftway, Old Greenwich CT  
203-637-3074  
[race@ogyc.org](mailto:race@ogyc.org)

#### **PROTEST**

Contact – Karen Varbaro [race@ogyc.org](mailto:race@ogyc.org)



## YRA Marks

A Gong 1 northeast of Wee Captain Island	K N4, Greenwich Harbor	Q Inflatable mark approximately 0.25 nm to leeward of the start	V Fixed RYC mark west of Sugar Boat
B N2, Flat Neck Point	L N2, Greenwich Harbor	R Fixed BHC mark south of Belle Haven Club	W Fixed RYC mark 0.25 nm ENE of Red Rock
C Inflatable mark approximately 1.50 nm to windward of the start	M Inflatable mark to the port side of the starting line	S Inflatable mark approximately 0.75 nm to windward of the start	X Fixed IHYC mark SW WSW of Red Rock
D Gong 32-A	N Inflatable mark approximately 0.50 nm to leeward of the start	T The finish mark located on the opposite side of the start boat from the starting line	Y Inflatable mark approximately 0.50 nm to windward of the start
G Bell 36, Bluefish Shoal	O Inflatable mark approximately 100 feet to windward of the starboard end of the starting line	U Fixed IHYC mark NNE of Great Captain Island Lighthouse	Z Inflatable mark approximately 1.00 nm to windward of the start
H Nun 2, west of Great Captain Island	P Fixed mark north of Wee Captain Island		
J Fixed IHYC mark off Calf Island			

Exceptions:

Government marks shall be passed on the channel side unless used as a mark of the course, with the following exceptions:

Marks B, D, K and L may be passed on either side at the discretion of the skipper when not used as a turning mark Can C-3, west of Mark K, may be disregarded and left on either hand

The channel between Cormorant Reef and Great Captain Island shall not be used Red Rock buoy and Newfoundland Reef buoy shall be passed on the south side

Hen & Chickens buoy 1A and Cormorant Reef Red Nun "4" shall be passed on the north side

The passage between Great Captain & Little Captain Islands shall not be used